



# LIMIRI TRAVELS

## 14 Day Kenya Safari Itinerary

### \*Arrive - Nairobi

- ❖ Pick up from the airport.
- ❖ Check in at Hotel Troy in Nairobi.



### Day 1 – Nairobi

- ❖ Morning pick up from the hotel at 9.30 a.m.
- ❖ Drive to David Sheldrick Elephant Orphanage, and the Giraffe Center in Nairobi.
- ❖ Lunch in Nairobi.
- ❖ Afternoon/evening drive to Narok through the Escarpment road where you will view the great Rift Valley.
- ❖ Dinner and Overnight in Narok at Esikar hotel.





# LIMIRI TRAVELS

## Day 02 – Maasai Mara

- ❖ Morning drive to Maasai Mara Game Reserve.
- ❖ Check and lunch at the hotel.
- ❖ Afternoon game drive and a visit to a Maasai village.
- ❖ Dinner and overnight at G & G hotel in Maasai Mara.

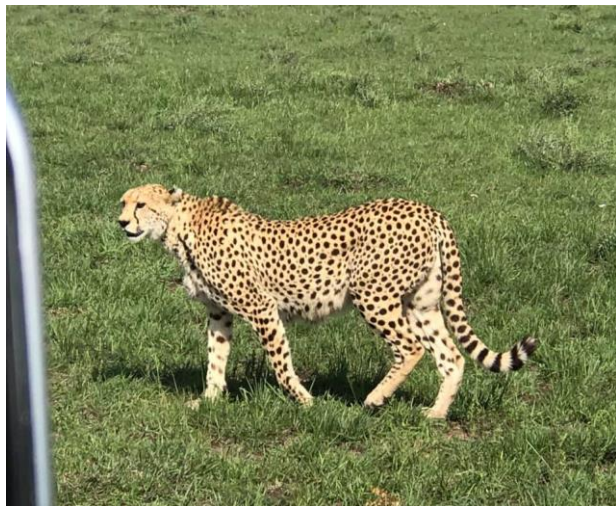




# LIMIRI TRAVELS

## Day 03 – Maasai Mara

- ❖ Morning Game drive.
- ❖ Lunch at the hotel
- ❖ After lunch rest and then have a late afternoon/evening game drive.
- ❖ Dinner and Overnight at G & G Hotel.



## Day 04 – Maasai Mara

- ❖ Early Morning Game Drive and breakfast at the savannah.
- ❖ Lunch at the Hotel.
- ❖ Afternoon Drive back to Narok.
- ❖ Dinner and overnight at Esikar Gardens.



Limiri Travels



# LIMIRI TRAVELS

## Day 05 – Lake Naivasha

- ❖ Morning Drive to Naivasha.
- ❖ Lunch at Naivasha Kongoni.
- ❖ Afternoon nature walk and hiking in Naivasha.
- ❖ Evening at Leisure.
- ❖ Dinner and overnight at Naivasha Kongoni.



## Day 06 – Lake Naivasha

- ❖ Morning game drive to Hell's Gate National Park plus hiking down Hell's Gate if weather permits.
- ❖ Lunch at Kongoni and Afternoon/evening at leisure.
- ❖ Pool/relaxation time in the afternoon.
- ❖ Dinner and Overnight at Lake Naivasha Kongoni.

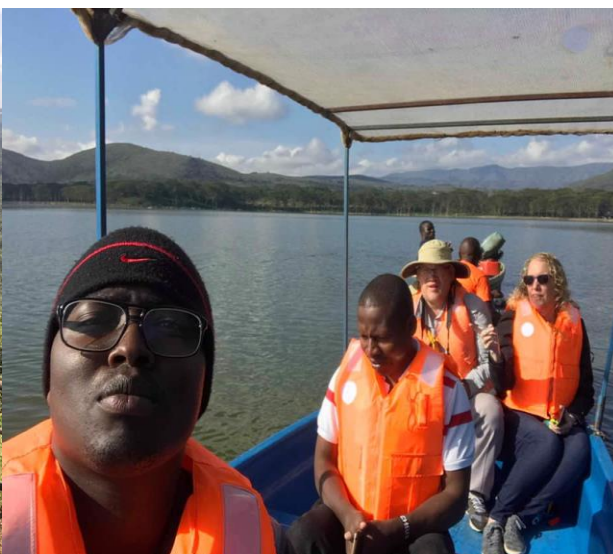




# LIMIRI TRAVELS

## Day 07 – Nakuru

- ❖ Check out and early morning boat ride at Lake Oloiden in Naivasha, then drive to Nakuru.
- ❖ Check in at Maili Saba Hotel and have lunch at the hotel.
- ❖ Late afternoon hike down at Menengai Crater.
- ❖ Evening sundowner activity.
- ❖ Dinner and overnight at the Camp.

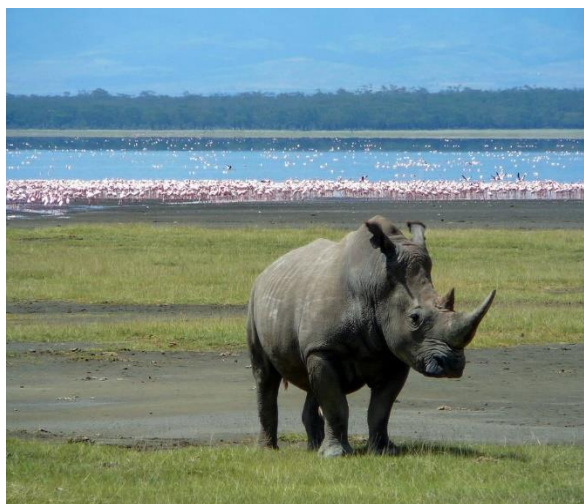




# LIMIRI TRAVELS

Day 08 – Nanyuki

- ❖ Early Morning Game drive at Lake Nakuru National.
- ❖ Lunch at Maili Saba Camp and check out.
- ❖ A quick Stop at Thompson Falls en-route to Nanyuki. Lunch en-route
- ❖ Afternoon check in at Soames Hotel.
- ❖ Dinner and Overnight at the Hotel.





# LIMIRI TRAVELS

## Day 09 – Meru

- ❖ Morning visit to the Mount Kenya Animal Orphanage.
- ❖ Lunch at Trout Tree Restaurant.
- ❖ Afternoon drive to Meru town.
- ❖ Dinner and Overnight at Three Steers hotel in Meru.



## Day 10 – Meru National Park

- ❖ Morning game drive to Meru National Park.
- ❖ Lunch at the camp.
- ❖ Late afternoon game drive.
- ❖ Dinner and Overnight at Meru National Park.





# LIMIRI TRAVELS

## Day 11 – Nairobi

- ❖ Drive back to Nairobi.
- ❖ Lunch at Mwea - Nice Hotel.
- ❖ Overnight and Dinner at Weston Hotel Nairobi.



## Day 12 – Amboseli National Park

- ❖ Morning drive to Amboseli National Park.
- ❖ Afternoon/Evening Game drive.
- ❖ Dinner and Overnight at Maasai Simba Camp.







# LIMIRI TRAVELS

## Day 13 – Nairobi

- ❖ Morning game drive at Amboseli National Park.
- ❖ Afternoon drive to Nairobi.
- ❖ Check in at the Weston hotel.
- ❖ Dinner and Overnight in Nairobi at Weston Hotel.



## Day 14 – Nairobi/Depart

- ❖ Morning at leisure. Then a mid-morning visit to Karen Blixen Museum.
- ❖ Lunch in Nairobi.
- ❖ Afternoon at leisure and then Transfer to Jomo Kenyatta International Airport for the departure flights.
- ❖ Traffic in Nairobi is one of the worst traffic in Africa. So, we will do our best to leave just in time so as not to get caught in traffic before we get to the Airport.



\* Itinerary is subject to change.